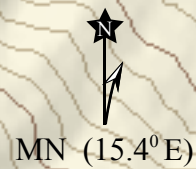


Please respect the wishes of the private landowners - USE ONLY DESIGNATED LZs



GPS Coordinates

- Main Launch** N40°50.533' W121°25.633'
- South Launch** N40°48.533' W 121°24.900'
- #1 LZ** N40°50.333' W121°26.283'
- #2 LZ** N40°50.417' W121°26.967'
- Buttonhook LZ** N40°48.650' W 121°25.733'

[Site location map and gas availability, click here.](#)

Please avoid landing on the private (north) end of the LZ

PRIVATE PROPERTY

- = Parking
- = Undeveloped Camping
- = Porta Potty

Please Be a Friend of the Rim

- ◇ Support the site, get the current 'Friend of the Rim' Sticker before you fly.
- ◇ Use the site responsibly and be considerate of others who use and visit the site.
- ◇ Use only designated LZs and parking areas.
- ◇ Drive carefully and courteously on all roads.
- ◇ Know the campfire laws and follow them.
- ◇ Fireworks are illegal at the site.

www.hatcreek.info

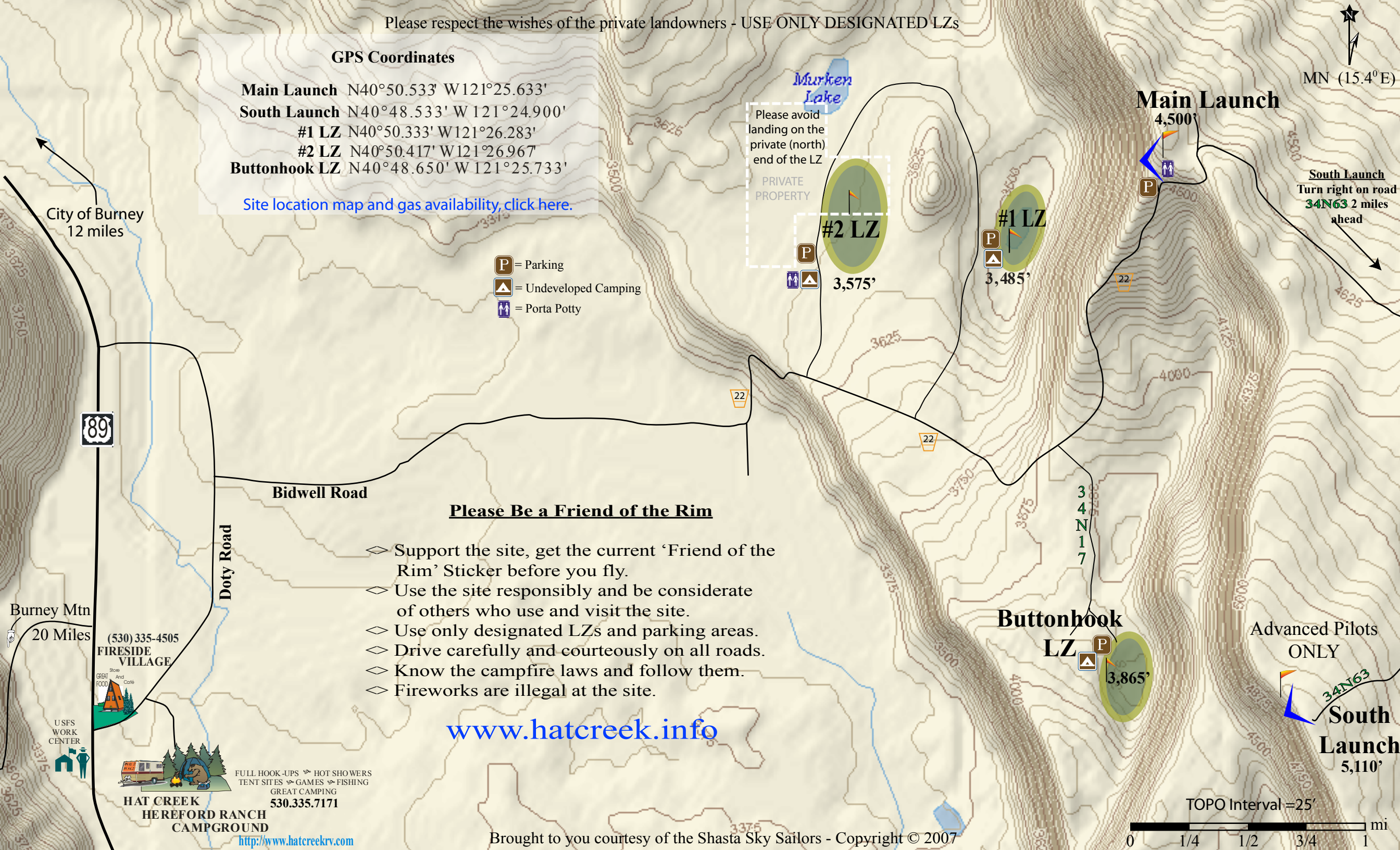
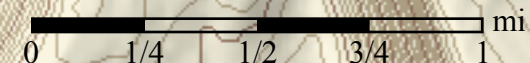
FULL HOOK-UPS ☞ HOT SHOWERS
TENT SITES ☞ GAMES ☞ FISHING
GREAT CAMPING
530.335.7171

**HAT CREEK
HEREFORD RANCH
CAMPGROUND**

<http://www.hatcreekrv.com>

Brought to you courtesy of the Shasta Sky Sailors - Copyright © 2007

TOPO Interval = 25'



City of Burney
12 miles

89

Bidwell Road

Doty Road

Burney Mtn

20 Miles

(530) 335-4505
**FIRESIDE
VILLAGE**



USFS
WORK
CENTER



Advanced Pilots
ONLY

**South
Launch**
5,110'

mi